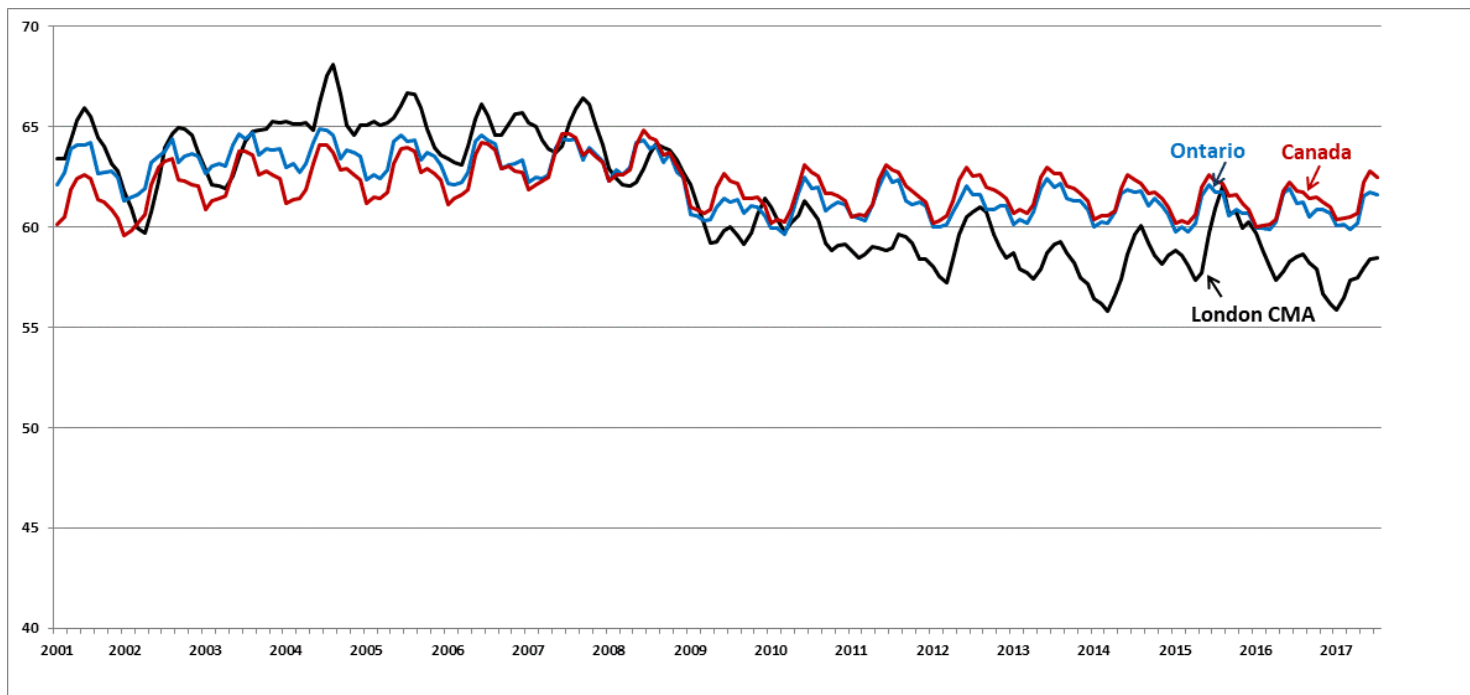


**The “employment” rate is defined quite simply as:  
the per cent of the population aged 15+ years who are currently employed**

## **Employment rate for persons aged 15+ years, London, Ontario and Canada**



**London’s employment rate has evolved from a situation whereby it was consistently higher than both the national & provincial averages in the early 2000s to a situation whereby it is consistently lower (true since the 2009 recession).**

**As an indicator of the extent to which available labour resources (people available to work) are being used in the region, this could be interpreted as a disturbing trend.**